

Corrigendum to Sailor et al 2015 article in Atmospheric Environment

The β_1 and β_2 coefficients in equations 5 and 6 were switched. The correct equations should be:

$$Q_{f \max}(winter, spring, autumn) = \beta_0 + PopDens * \beta_2 + HDD * \beta_1 \quad (5)$$

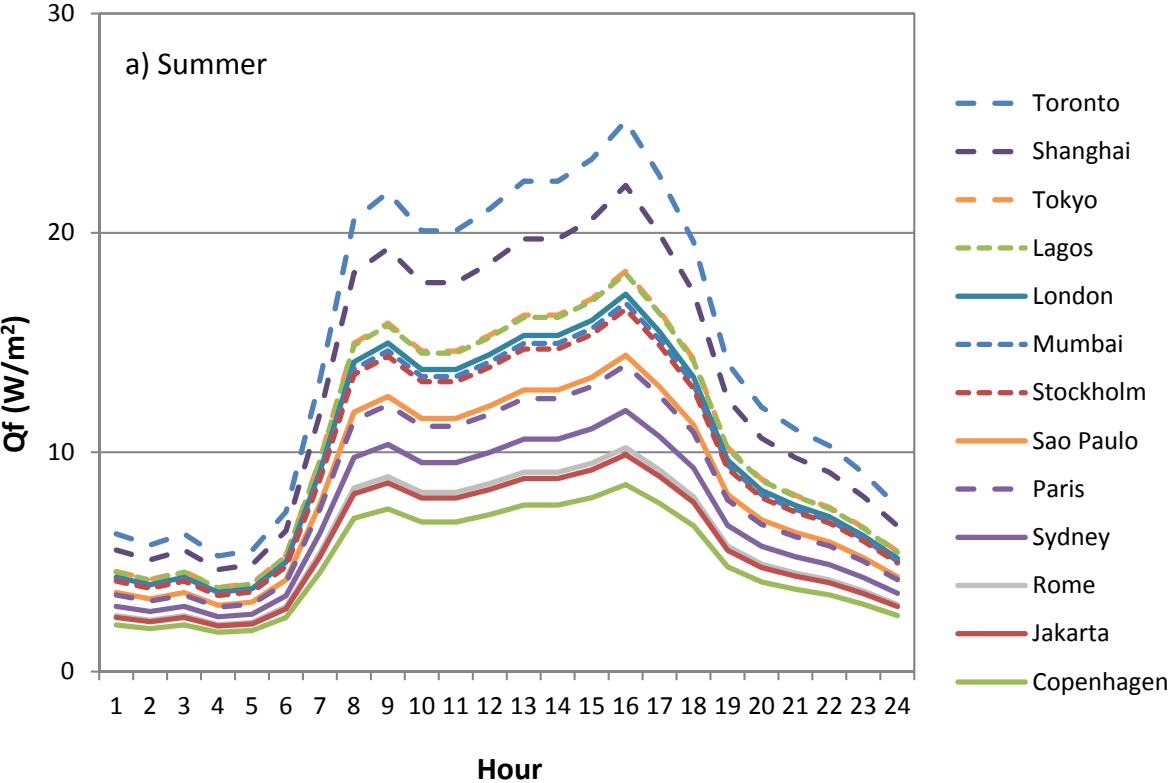
$$Q_{f \max}(summer) = \beta_0 + PopDens * \beta_1 \quad (6)$$

There was also a miscalculation of summertime maximum Qf in Table 6, this also impacts Figure 5 (a).

Table 6 should read:

Country	City	Total annual HDD	Total monthly winter HDD	Population density (pers/km ²)	Maximum Qf summer (W/m ²)	Maximum Qf winter (W/m ²)
Australia	Sydney	656	185	2100	11.91	21.81
Canada	Toronto	3428	685	2650	25.11	103.26
Denmark	Copenhagen	4305	639	1850	8.53	41.06
France	Paris	2586	516	3550	13.98	39.95
Italy	Rome	1123	314	2950	10.21	23.10
Japan	Tokyo	1633	348	4750	18.26	37.14
Sweden	Stockholm	4627	780	2700	16.52	74.50
UK	London	2681	457	5100	17.21	39.16
Brazil	Sao Paulo	330	29	9000	14.42	17.79
Indonesia	Jakarta	0	0	10500	9.89	11.97
India	Mumbai	0	0	29650	16.81	21.77
China	Shanghai	1633	398	13400	22.16	36.60
Nigeria	Lagos	0	0	18150	18.14	22.96

Figure 5 (a) should read:



The authors apologize for any inconvenience caused.

Sailor, D.J., M. Georgescu, J. Milne, and M. Hart, 2015. Development of a national anthropogenic heating database with an extrapolation for international cities”, *Atmospheric Environment*, 118, 7-18.